

FW-Series

A NAME YOU CAN TRUST FOR ALL YOUR PRECISION AIR CONDITIONING NEEDS



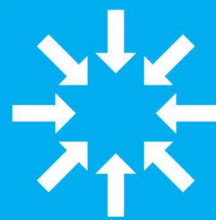
FW Series

The FW-Series is a Fan Wall module specifically designed and built for large-scale data centre operations, providing energy efficiency at the highest level with lesser footprint.

Modular, customizable and scalable, the PrimeWall unit can provide up to 800kW of cooling capacity or more based on clients' requirements.



High Capacity
output



Compact
Footprint



Maintenance
Friendly

- > Highly modular & customizable
- > Increased maximum cooling capacity
- > Largely reduced footprint
- > Single front access door for all maintenance

STANDARD CONFIGURATION

Default configurations offers 3 optimized standard configuration to choose from, with multiple cooling capacities ranging from 200kW up to 800kW.



FW Series

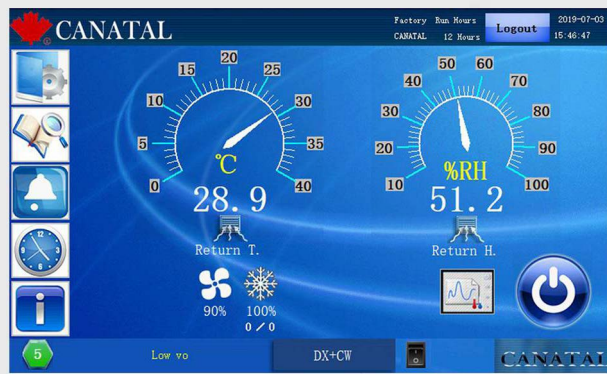
The FW Series module consist of the standardized model assembled based on a successful custom design set to be deployed in a large scale Data Centre in the east of Singapore in an ongoing project.

The standardized model enables quicker delivery and deployment timeframe while still maintaining implementation of various optional features and specific requirements to ensure your DC facility functions with maximum efficiency at the lowest operating cost.

TECHNICAL SPECIFICATIONS

Technical Data	FW-200	FW-400
Net Sensible Cooling Capacity (kW)	207	414
Total Cooling Capacity (kW)	207	414
Energy Efficiency Ratio (EER)	20.7	20.7
Supply Air Temperature (C)	21.7	21.7
Return Air Temperature (C)	35	35
Chill Water Supply Temperature (C)	15	15
Chill Water Return Temperature (C)	21	21
Max Power Input (kW)	14.4	28.8
Dimensions (W x D x H)mm With Electrical Panel	2400 x 800 x 3000	4600 x 800 x 3000

CORE COMPONENTS



7" Control Panel

Control access to all components within the system with fine-tuned algorithm, optimizing control with multiple operating modes for maximum efficiency.



EC Fan

Large Scale Data Centre oriented with reduced footprint, easing maintenance and servicing at the highest efficiency

OPTIONAL COMPONENTS

Offering different unit configurations and a wide range of cooling capacities, CANATAL has designed the FW-Series to cater and suit to your unique business requirements. Equipped with the latest components, the FW-Series is the purpose-built solution for your application.



PICV Valve



Integrated UPS



Supply Air Damper



Built-in ATS



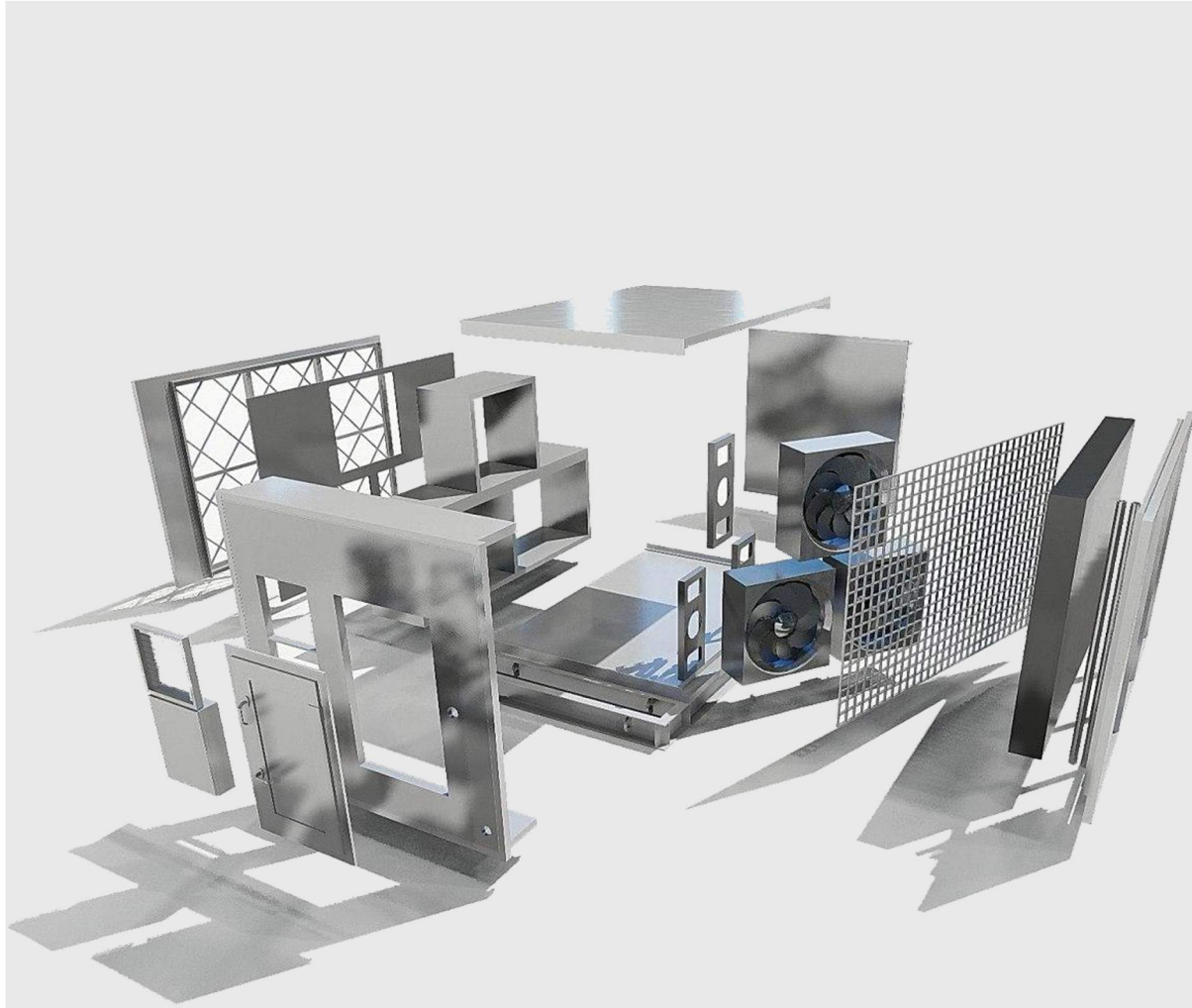
Flow Meter



Power Meter

CUSTOMIZED MODULAR DESIGN

Being highly customizable, modular and scalable, the FW Series is custom tailored to your mission-critical business requirements in order to achieve maximum efficiency and the lowest TCO/PUE. Components are easily integrated separately which gives the ease of access and maintenance, which in turn greatly reduces total cost in the long run.



Unconventional Deployment:

Contrary to the conventional norms, CANATAL FW Series module has been specifically designed to have the EC fans placed at the back of the standard systems instead of sides for the ease of maintenance.

Here at Canatec, we understand what are the important criterias to maintain and how to position certain components to achieve the ease of accessibility.

State-of-the-art Technology:

Advanced technology catered for data centre usage, decreasing total overall footprint used to deploy the FW Series modules without raised floors. This enables more valuable spaces to be used for the mission-critical facility and at the same time, providing additional value in terms of cooling capacity and lower total cost of ownership (TCO).

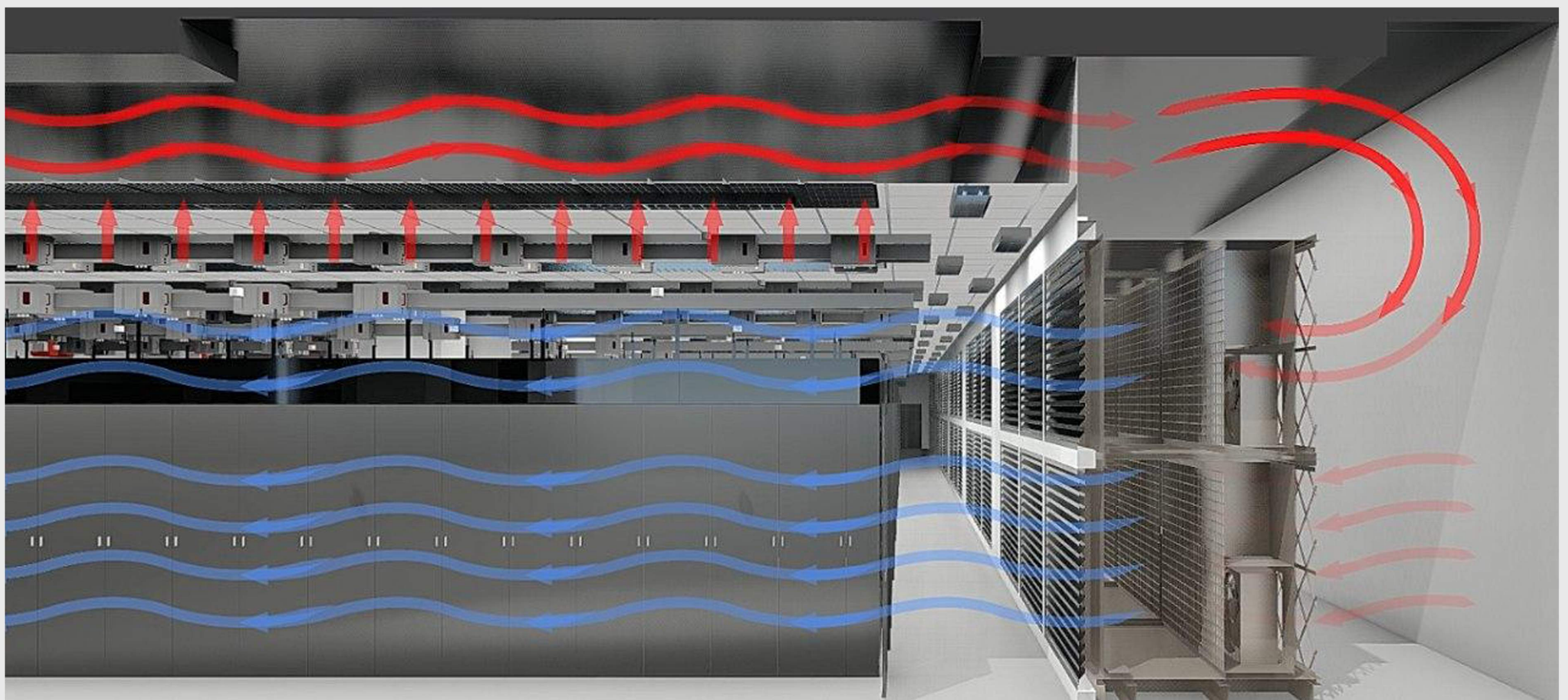


Figure 1A - FW Series modules stacked and deployed in a cold-aisle configuration