

Coolant Distribution Unit (CDU)

Up to 2MW of cooling per unit



Superior thermal management

Exponential growth

With AI and HPC pushing rack densities beyond 40 kW, data centre infrastructure must evolve. Liquid cooling solutions offers a more effective approach in removing heat, supporting higher rack densities, and improving overall energy efficiency.

Engineered for the latest demands

With up 2MW cooling capacity in a single unit, our CDU is designed for high-density workloads. Our flexible CDU can be integrated with ease alongside legacy solutions and allows existing and upcoming data centres to future-proof with liquid cooling technology.

Features & Benefits



Space Optimization

Compact design maximizes available space and allows for higher server density.



Proactive

Actively filters impurities, prolonging system reliability and liquid cooling quality.



Flexible Deployment

Fits various environments, from small server rooms to large-scale operations.



Lower PUE

Efficient system surpasses local standard PUE requirement.



Superior Heat Transfer

Liquid cooling offers the most efficient heat removal, ideal for high-density applications.



Hybrid Adoption

CDUs can be implemented alongside existing air cooling solutions for flexibility.

Liquid cooling enables the future of innovation

Deep Machine Learning



High Performance Computing



Genomics & Bioinformatics



Cloud Service Hosting



Inside our Coolant Distribution Unit

Plate Type Heat Exchanger

Space-efficient while enabling rapid transfer of heat.

Secondary Pumps

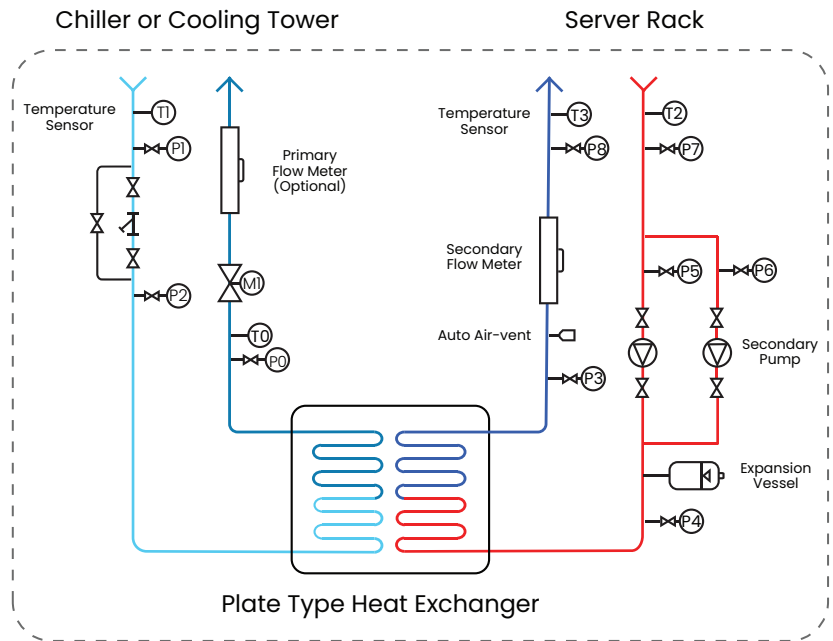
Secondary Pumps can run in single pump, dual pumps (1+1) or dual pumps mode.

Filtration System

25µm filter removes impurities to ensure optimum liquid quality.

Optional Components

Side stream filter. Battery back-up. Rack-level control system.



Specifications

Model (CDU***)	048	068	135	200
Capacity (kW)	480	680	1350	2000
Primary	Water			
Water Supply/Return (°C)	18 / 26			
Water Flowrate (L/s)	14.6	20.6	41.0	60.1
Pipe Connection Size (DN)	80	100	150	200
Pressure Drop (kPa)	<110			
Secondary	Water / PG25			
Coolant Supply/Return (°C)	22 / 32			
Flow Rate (L/s)	12.4	17.5	34.6	51.4
Pipe Connection Size (DN)	80	100	150	200
Pump Type	Centrifugal Pump			
Pump Quantity at N	1	1	2	2
Unit Width (mm)	800	1200	1600	2400
Unit Depth (mm)	1400	1400	1400	1400
Unit Height (mm)	2200	2200	2200	2200
Unit Weight (Kg)	1000	1500	1800	2100

- Please contact our representatives for other requirements.
- The manufacturer reserves the rights to make changes to the product specifications. The data shown above may vary.