

Environmental Monitoring System

Real time data at your fingertips

Actionable insights in one singular panel

An Environmental Monitoring System (EMS) is an important tool for ensuring efficient and reliable data centre operations.

The collected data is centralised into a single interface, providing real-time data and actionable insights. By consolidating data into a single view, operators can quickly uncover inefficiencies or risks and take corrective action before issues become critical.



Features & Benefits



Optional Battery Backup

Safeguards electrical equipment and ensures uninterrupted operations.



Communication Options

Receive alerts via MODBUS, Email, SMS, WhatsApp or Wechat.



History Log

5000 events history log with timestamps for tracking and analysis.



Interactive Graphic Map

Local touch screen display to show interactive graphic map.



Audible and Visual Alarms

Automatic detection of leaks and broken or contaminated cables.



Customizable Pages

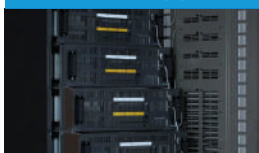
Adjustable zone names and sensitivity set points for leaks and contamination.

Applications

Room Sensor



Uninterruptible Power Supply



Leak Detection System



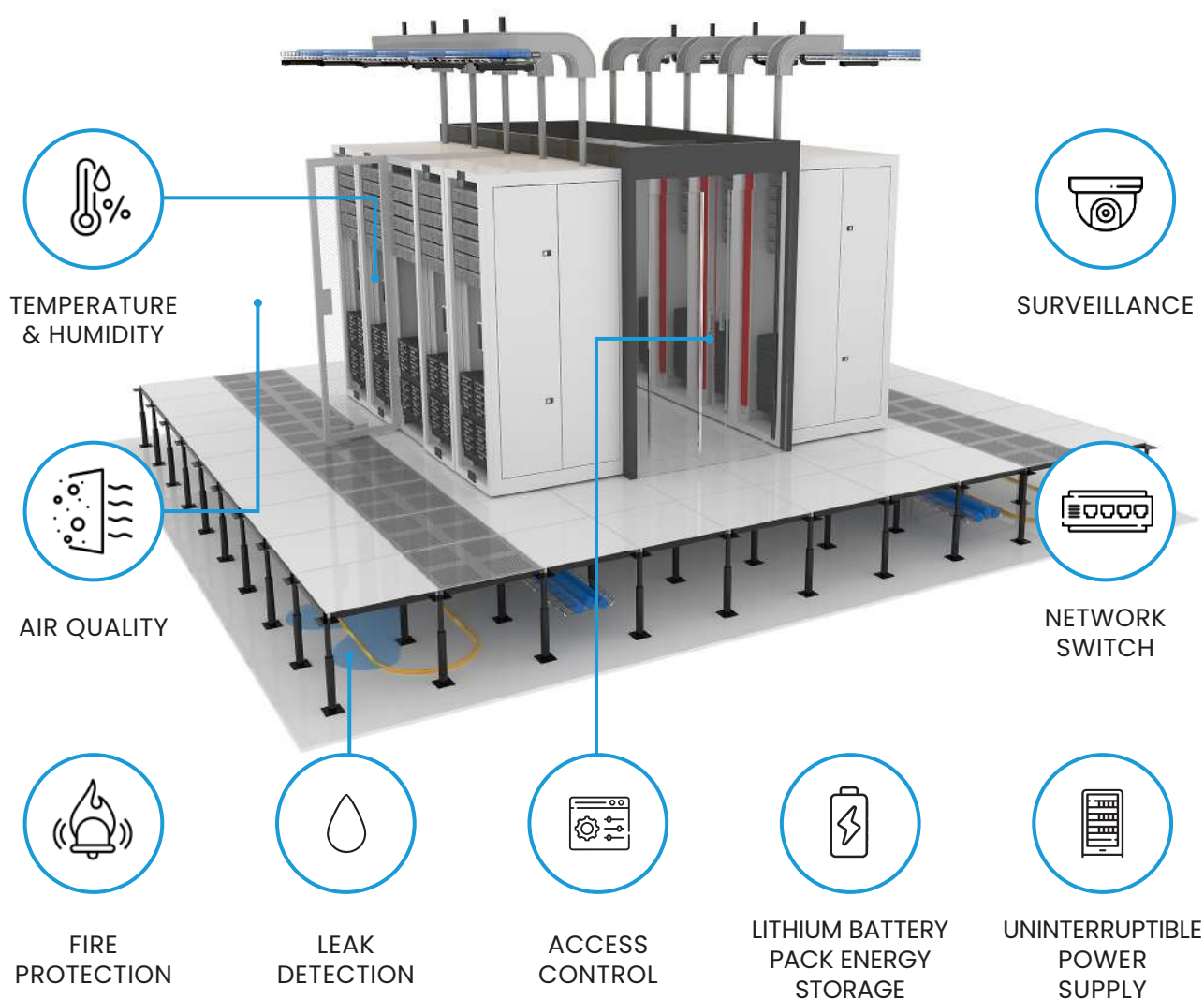
CRAC Equipment



Power Management System



Wide range of environmental parameters



Specifications

Model	EMS
Dimension	270mm (W) x 186mm (H) x 42mm (D)
Power Requirement	220V AC± 15%
Display Type/Size	10.1 Inch Touch Screen
Max Power Consumption	36VA
Communication Interface	MODBUS, Email, SMS, WhatsApp, Wechat